



**Global  
Conference  
on sustainable  
and resilient  
infrastructure**

**Jornada  
Internacional sobre  
infraestructuras  
sostenibles  
y resilientes**



Colegio de Ingenieros  
de Caminos  
Canales y Puertos  
de Madrid

Spanish  
Institution  
of Civil  
Engineers - Madrid

**Monday,  
October 30th, 2017**

**Lunes 30  
Octubre 2017**

**Objective** To discuss about the integration of sustainable practices during the financing, planning, design, construction and operation of an infrastructure project, and the inclusion of this approach in the decision-making processes. We will also look at sustainability and resiliency as the best strategy to add VALUE and QUALITY to the projects, to the surrounding environment and to all the stakeholders participating in the infrastructure development, as well as the best way of cost effectiveness in the long term.

To raise public awareness on the relevance of this approach and, so, to discuss the ways to include this concept in the decision making and bidding processes.

To show and discuss current trends in the sector with global leaders, and find business opportunities through an open forum of discussion.

This conference will integrate different perspectives from policymakers and regulators, investors and project developers, operators and contractors, planners and designers, banks, global agencies or academia among others.

A Global approach will be provided including speakers from Europe, America, Asia, and Africa.

**Objetivo** Reflexionar sobre la integración de prácticas sostenibles durante la concepción, financiación, planificación, diseño, construcción y operación de una infraestructura; así como la inclusión de este enfoque en los procesos de tomas de decisiones. Además se visualizará la sostenibilidad y resiliencia de las infraestructuras como la mejor estrategia para añadir VALOR y CALIDAD a los proyectos y a su entorno, para prestigiar a todos los agentes implicados en su desarrollo y para maximizar la rentabilidad económica.

Concienciar al sector público y a los agentes privados sobre la relevancia de este enfoque y la conveniencia de incluir el concepto como elemento de evaluación en los procesos de licitación.

Presentar y discutir lo que se está haciendo a nivel mundial en el sector, detectar oportunidades de negocio y poner en valor el enfoque de sostenibilidad; atraer a *speakers* de nivel de otros países y conformar un foro de discusión global con ponentes/conferenciantes de Europa, América, Asia y África, etc.

Todo ello desde una perspectiva global desde varios puntos de vista: sector público y agente regulador, promotor, explotador, operador gestor, planificador, diseñador, constructor, financiador, aseguradora, tecnólogo, fabricante, academia/universidad.

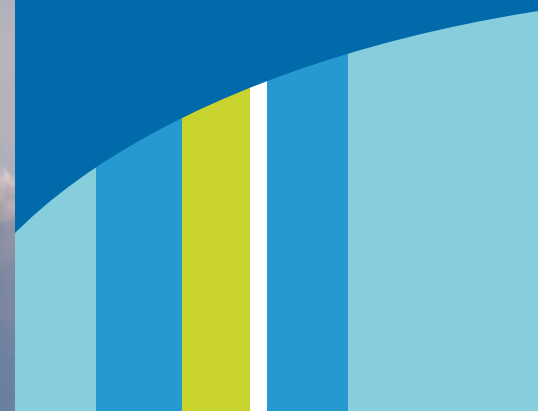


Infraestructuras sostenibles y resilientes: el enfoque más rentable para aumentar la calidad de los proyectos, para ganar prestigio, para crear mayor valor a la sociedad y a los agentes públicos y privados intervinientes, y para facilitar el acceso a capital.



Sustainable and resilient infrastructure: a cost-effective solution to increase the quality of the projects, to gain acceptance and create value for civil society, and to the public and private sector, and to gain access to capital.





# Programa

## Program

### Sesiones matutinas

#### Morning Sessions

8.30 - 9.00

Recepción de Asistentes

Attendees Wellcome

9.00 - 9.15

Inauguración: Ministerio de Fomento

Opening by the Spanish Ministry of Civil Works and the Spanish Institutional of Civil Engineers–Spanish Government

- Miguel Ángel Carrillo (Dean. Spanish Institution of Civil Engineers–Madrid)
- Juan Francisco Montalbán (Special Ambassador for the 2030 Agenda, Spanish Government)
- Julio Gómez-Pomar (Secretary for Infraestructure, Transport and Housing–Spanish Government)



## 9.15 - 10.45 Panel 1

Nuevas tendencias a nivel global,  
¿hacia dónde nos dirigimos?

Global new tendencies.  
Where are we heading?

Ponentes / Speakers:

- Robert Ndugwa (Officer in Charge of the Global Urban Observatory Unit, United Nations)
- Jordan Z. Schwartz (Director Infrastructure, PPPs and Guarantees, The World Bank)
- Cristina Contreras (Sustainable Infrastructure, Harvard University)

Moderador / Moderator:

Mauricio Gómez (Spanish Institution of Civil Engineers. IDOM Consulting, Engineering, Architecture)

## 10.45 - 11.45 Panel 2

Adaptación de las Administraciones  
Públicas a los nuevos niveles de exigencia.

Public bodies, policy makers and regulators  
adaptation to the new levels of demand.

Ponentes / Speakers:

- Manuel Niño (Infrastructure General Secretary, Ministerio de Fomento–Spanish Government)
- Adriano García-Loygorri (Technical Counselor, General Directorate of Water. Ministerio Agricultura, Alimentación y Medio Ambiente–Spanish Government)
- Ezequiel Domínguez (General Coordinator for Planning, Urban Development and Mobility, Madrid City Council)

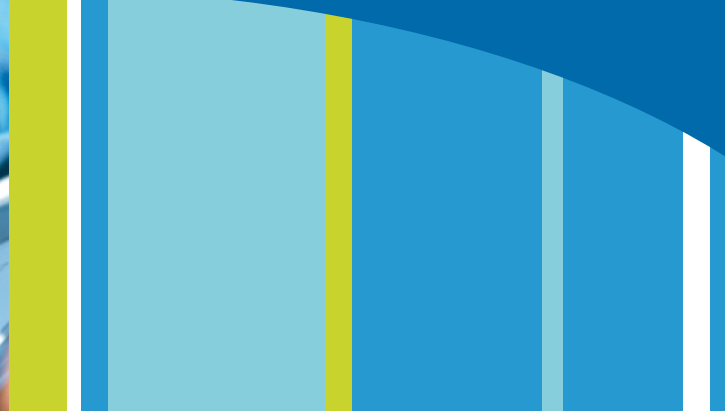
- Joe Ghartey (Minister for Railway Development, Republic of Ghana)
- Pablo de la Flor (Executive Director of the National Authority for Reconstruction with Changes, República del Perú)

Moderador / Moderator:

Natalia Gullón (Consejera Técnica AECID, Ministerio de Asuntos Exteriores y Cooperación–Spanish Government)

## 11.45 - 12.15

Coffee Break



## 12.15 - 13.45 Panel 3

La visión de la empresa privada:  
planificadores, proyectistas y contratistas.

Perspectives from the private sector:  
planners, designers and contractors.

Ponentes / Speakers:

- Lin Yichong (Chairman, China Harbour Engineering Company, Ltd.)
- Antonio Burgueño (Member of the Committee Transparency and Social Responsibilities, working group ODS. Spanish Institution of Civil Engineers, Madrid. Managing Director Quality and Corporate Social Responsibility. FCC)
- José María Moure (Head of Hydraulics, AECOM)

- Miguel Prieto (Associate Director Infrastructure Leader, ARUP)
- Daniel Rubio (Director Infrastructures, Planning Division, IDOM Latam)
- Antonio Ramírez (Innovation and Knowledge Director, SACYR)

Moderador / Moderator:  
S.S. Nair (Chairman SUEZ  
CAPITAL LTD. )

## 13.45 - 15.30

Lunch Break

Sesiones  
de la tarde  
Afternoon  
Sessions



## 15.30 - 16.30 Panel 4

Financiando Infraestructura Sostenible.  
¿Cuál es el rol de instituciones financieras  
y empresas aseguradoras?

Financing Sustainable Infrastructure.  
What is the role for Financers and Insurers?

Ponentes / Speakers:

- Daniel Pulido (Infrastructure Specialist in Latin American and the Caribbean Region, World Bank)
- Luis Hebrero (Projects Directorate, European Investment Bank)
- Natsuko Totsuka (Principal Portfolio Management Specialist, Asian Development Bank, Manila)
- Mariana Silva (Managing Associate, Infrastructure, Planning and Final Unit, NATHAN)

Moderador / Moderator:  
Fernando Pons (European Bank for  
Reconstruction and Development, VP  
Corporate Services and Chief Administrator  
Officer)

## 16.30 – 18.00 Panel 5

La perspectiva de los gestores,  
operadores y mantenedores  
Perspectives from operators.

Ponentes / Speakers:

- Isabel Pardo de Vera (General Director of Exploitation and Constructor, High Speed Railway Administrator. ADIF. Ministerio de Fomento–Spanish Government)
- L. Alejandro Chércoles (Head of Studies Projects and Renewals Track Section–Metro de Madrid, S.A.)

- José Luis Marín (Chairman RENOVALIA ENERGY GROUP)
- Antonio Pérez de Arenaza (O&M Director, ACCIONA CONCESIONES)

Moderador / Moderator:

Fernando Ruiz (President of the Committee Transparency and Social Responsibilities, Working Group ODS. Spanish Institution of Civil Engineers–Madrid. General Manager of Environmental and Energy, TYPESA)

## 18.00 - 18.30

Clausura del Evento y reflexiones finales.  
Closure, closing remarks and next steps.

- Mauricio Gómez (President Training Committee Spanish Institution of Civil Engineers–Madrid)
- Rosalía Gonzalo (Transports, Infrastructures and Housing Counselor, Madrid Regional Government)

### Inscripciones:

Para consultas y/o más información a través de 913081999 o (cursosdm@ciccp.es) con Carlos Maldona. Cumplimentar el formulario de inscripción en la web.

### Cuota (incluye almuerzo, café y documentación técnica)

Ingenieros de Caminos colegiados: 80€  
ICCP colegiados en situación de desempleo: 30€  
Otros profesionales: 100€

### Pago de la Cuota

Incluir datos de identificación del alumno y referencia 291 CM de la Jornada

### Transferencia bancaria a Banco Caminos.

Cuenta: ES28 0234 0001 01 98000 24890  
Titular: Colegio de Ingenieros de Caminos, Canales y Puertos



Colegio de Ingenieros  
de Caminos  
Canales y Puertos  
de Madrid

### Contact details:

+34913081999  
cursosdm@ciccp.es  
online registration form in web page

### Fee (lunch, coffee and technical documentation included)

Chartered engineer (Spanish Institution of Civil Engineers): 80€  
Unemployed Chartered engineer (Spanish Institution of Civil Enginners): 30€  
Other professionals: 100€

### Payment Reference

Payment reference, please include your name and following reference 291 CM

### Bank transfer:

IBAN: ES28 0234 0001 01 98000 24890  
Holder's bank account: Colegio de Ingenieros de Caminos, Canales y Puertos



### Colegio de Ingenieros de Caminos, Canales y Puertos de Madrid

C/ Almagro 42 2ª planta  
28010 Madrid

Tel.: +34913081999  
Fax: +34913910617  
www.caminosmadrid.es  
madrid@ciccp.es